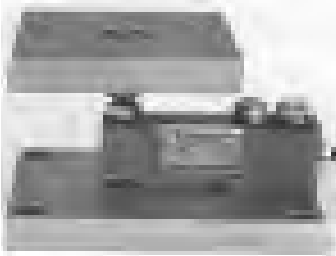
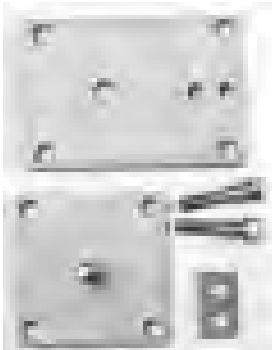


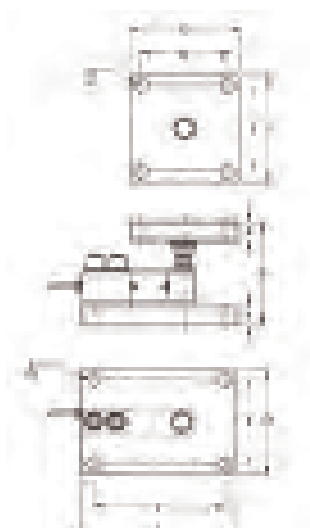
Tank Mount



TSWM-4K-SS w/optional load cell



TSWM Kit



Spherical Washer Beam Mounting Assembly (without load cell)

Spherical Washer Mounting assembly for single ended beams w/threaded load hole, TSB, NSB, 65023, 5123. The weighing vessel will be on a top mounting plate that is on spherical washers. There is 1/8" clearance for alignment of the top plate to the threaded rod that screws into the load cell. Zinc plated steel and **stainless steel**. Add load cell from Beam section.

Part Number	Capacity	Thread	Weight
Zinc Plated Steel			
TSWM-4K	250 - 5,000SE lb	1/2-20	13 lb
SE = Small Envelope 5,000 lb cap			
TSWM-10K	5,000 - 10,000 lb	3/4-16	19 lb
TSWM-20K-14 *	15,000 - 20,000 lb	1-14	45 lb
* Note: TSB-20K, NSB-20K, 65023-20K have 1-14 thread			
TSWM-20K-12 **	15,000 - 20,000 lb	1-12	45 lb
** Note: 5123-20K has 1-12 thread			

Stainless Steel			
TSWM-4K-SS	250 - 5,000SE lb	1/2-20	13 lb
SE = Small Envelope 5,000 lb cap			
TSWM-10K-SS	5,000 - 10,000 lb	3/4-16	19 lb
TSWM-20K-14-SS *	15,000 - 20,000 lb	1-14	45 lb
* Note: TSB-20K-SS, NSB-20K-SS, 65023-20K-SS have 1-14 thread			
TSWM-20K-12-SS **	15,000 - 20,000 lb	1-12	45 lb
** Note: 9123-20K has 1-12 thread			

Dimensions in inches

Capacity	A	B	C	D	E	F	G
250-5KSE	4-4.50	7.12	6.00	5.00	4.00	0.70	5.00
5K-10k	5-5.50	8.50	7.00	5.00	4.00	0.94	5.00
15K-20k	5-5.50	8.50	7.00	5.00	4.00	1.44	5.00

Dimensions in inches continued

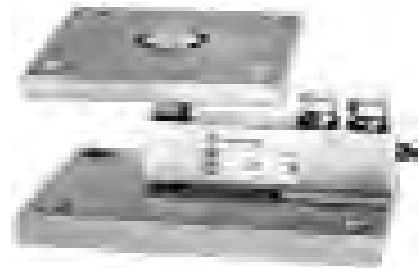
Capacity	H	I	J	K	L	M
250-5KSE	4.00	5.00	4.00	0.50	0.63	0.63
5K-10k	4.00	5.00	4.00	0.50	0.63	0.63
15K-20k	4.00	5.00	4.00	0.50	0.63	0.63

Tank Mount

Ball & Socket Beam Mounting Assembly (without load cell)

Ball and Socket Mounting assembly for single ended beams w/threaded load hole, TSB-SS, NSB-SS, 65023-SS, 9123. The weighing vessel will be on a top mounting plate that has a ball and socket for alignment. The ball and socket has a threaded rod that screws into the load cell. **Stainless steel.** Add load cell from Beam section.

Part Number	Capacity	Weight
TBSM-4K-SS	250 - 5,000SE lb	13 lb
	SE = Small Envelope 5,000 lb cap	
TBSM-10K-SS	5,000 - 10,000 lb	19 lb



TBSM-4K-SS
w/optional load cell



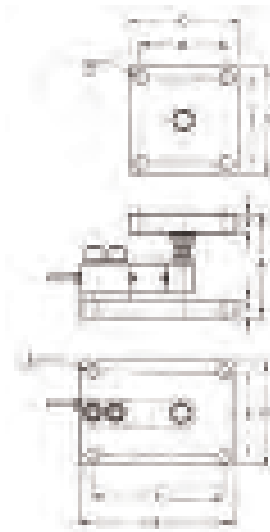
TBSM Kit

Dimensions in inches

Capacity	A	B	C	D	E	F	G
250-5KSE	4-4.50	7.12	6.00	4.00	4.00	0.50	5.00
5K-10k	5-5.50	8.50	7.00	4.00	4.00	0.50	5.00

Dimensions in inches

Capacity	H	I	J	K	L	M
250-5KSE	4.00	5.00	4.00	0.50	0.63	0.63
5K-10k	4.00	5.00	4.00	0.50	0.63	0.63



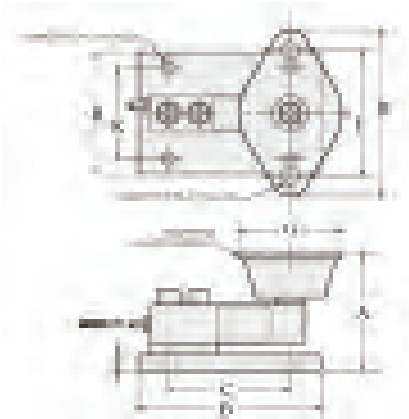
Tank Mount



TM59 Mount



Disassembled view



TM-SC-10-ZP

TM59 Tank Mount Assembly (without load cell) - Totalcomp

This assembly will convert a single ended beam into a tank mount. Totalcomp Model TSB, Nikkei Model NSB, Sensortronics Model 65023 and RTI Model 5123 are used in 500 lb to 2,500 lb capacity. Totalcomp Model TB40 or TB41 and Sensortronics Model 60040 are used in 50 lb to 250 lb capacities. The hopper or tank will be mounted firmly to the top neoprene shock absorption pad. The steel base plate is bolted to the floor or suitable structure. Zinc plated steel. Optional **Stainless Steel**. Add load cell from Beam section.

Part Number	Capacity	Weight
TM59-500	500 lb	3 lb
TM59-1K	1,000 lb	3 lb
TM59-2.5K	1,500 lb - 2,500 lb	4 lb
TM59-4K	4,000 lb	5 lb

Stainless Steel

TM59-250-SS	50 lb - 250 lb	3 lb		
TM59-500-SS	500 lb	3 lb		
TM59-1K-SS	1,000 lb	3 lb		
TM59-2.5K-SS	1,500 lb - 2,500 lb	4 lb		
TM59-4K-SS	4,000 lb	5 lb	1572	345.00

Dimensions in inches

Capacity	A	B	C	D	E	F	G	H	K
50-250	3.13	4.00	3.25	3.86	3.00	0.50	2.38	3.00	2.25
500	3.88	6.00	4.00	5.50	4.13	0.50	3.38	4.00	3.00
1K	4.00	6.00	4.00	5.13	4.13	0.50	3.00	4.00	3.00
1.5-2.5K	4.00	6.00	4.00	6.25	5.00	0.50	4.62	4.00	3.00

Beam Mounting Assembly (without load cell)

Single ended beams, HBM Model SB3 or RTI Model SSB will mount in this assembly. The load from the hopper or tank will be transmitted to the bottom of a vertical tension bolt that hangs from the load hole. Spherical washers at top and bottom of tension bolt allow for self alignment of the vessel. Zinc plated steel. Add load cell from Beam section.

Part Number	Capacity	Weight
TM-SC-125-ZP	1,000 - 5,000 lb	22 lb
TM-SC-10-ZP	10,000 lb	36 lb
TM-SC-20-ZP	20,000 lb	63 lb
TM-SC-40-ZP	40,000 lb	123 lb

Stainless Steel

TM-SC-125-SS	1,000 - 5,000 lb	22 lb
TM-SC-10-SS	10,000 lb	36 lb
TM-SC-40-SS	40,000 lb	123 lb

Tank

Scaime Stabiflex Beam Mounting Assembly (without load cell)

Scaime Model F60X single ended beam will mount in this assembly. Includes top and bottom mounting plates. Electrical ground strap connects the top and bottom plate. Overload stops for downward and upward forces. Ball and cup design limits side load and is self centering. Stainless steel. Add load cell from Beam section.

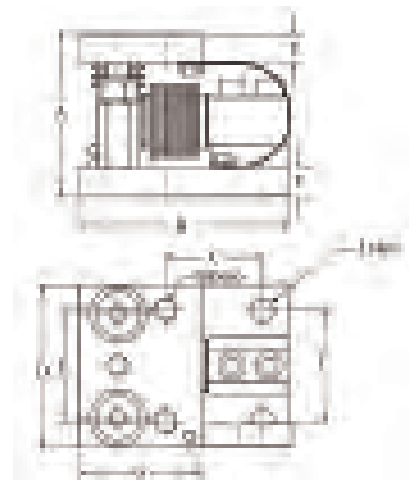
Part Number	Capacity	Nominal	Weight
Stabiflex 500	500 kg	1,000 lb	22 lb
Stabiflex 2T	2 t	4,000 lb	36 lb



Stabiflex

Dimensions in inches

Capacity	A	B	C	D	E	F	G	L	M
500	3.15	5.12	2.67	3.94	2.75	0.59	2.75	0.47	M12 X 1.75
2t	4.33	5.51	2.56	4.33	2.95	0.78	3.15	0.63	M16 X 2



Tank



TTM Tank Mount Assy

TTM Tank Mount Assembly - Totalcomp

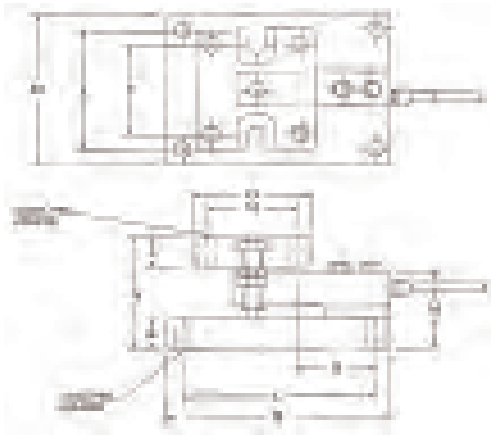
All **stainless steel** construction, this tank mount assembly uses a hermetically sealed beam load cell with a blind load hole that has a flat loading surface. Expansion and contraction due to thermal changes and side load from external forces are handled with rocker pin mounting. After the side load has been removed the mount will re-center itself using the rocker pin. This mount is unequalled for repeatability. Overload and overlift protection. Integral lateral stops.

2 mv/v, 0.03% combined error, 350/350 ohms, 15 ft 4 cond cable, **stainless steel** load cell and mount, IP67.

Part Number	Capacity	Weight
TTM-500-SS	500 lb	19 lb
TTM-1.25K-SS	1,250 lb	19 lb
TTM-2.5K-SS	2,500 lb	19 lb
TTM-4K-SS	4,000 lb	19 lb
TTM-5K-SS	5,000 lb	19 lb
TTM-10K-SS	10,000 lb	25 lb

Replacement load cells

TB745-500-SS	500 lb	3 lb
TB745-1.25K-SS	1,250 lb	3 lb
TB745-2.5K-SS	2,500 lb	3 lb
TB745-4K-SS	4,000 lb	3 lb
TB745-5K-SS	5,000 lb	4 lb
TB745-10K-SS	10,000 lb	6 lb



Dimensions in inches

Capacity	A	B	C	D	E	F	G
500-2.5K	3.782	7.500	6.500	5.000	4.000	3.000	4.000
4K	3.946	7.500	6.500	5.000	4.000	3.000	4.000
5K	4.030	7.500	6.500	5.000	4.000	3.000	4.000
10K	4.280	8.500	7.500	5.000	4.000	3.000	4.000

Dimensions in inches continued

Capacity	H	K	L	M	N
500-2.5K	3.000	1.00	1.00	2.590	2.650
4K	3.000	1.00	1.00	2.590	2.650
5K	3.000	1.00	1.00	2.838	2.650
10K	3.000	1.00	1.00	3.088	3.900

Tank

RTM Tank Mount Assembly - HBM

All **stainless steel** construction, this tank mount assembly uses a hermetically sealed beam load cell with a blind load hole that has a flat loading surface. Expansion and contraction due to thermal changes and side load from external forces are handled with rocker pin mounting. After the side load has been removed the mount will re-center itself using the rocker pin. This mount is unequalled for repeatability. Overload and overlift protection. Integral lateral stops.

2 mv/v, 0.03% combined error, 350/350 ohms, 15 ft 4 cond cable, 30 ft on 10K, **stainless steel** load cell and mount.

Part Number	Capacity	Weight
RTM-500	500 lb	19 lb
RTM-1.25K	1,250 lb	19 lb
RTM-2.5K	2,500 lb	19 lb
RTM-4K	4,000 lb	19 lb
RTM-5K	5,000 lb	19 lb
RTM-10K	10,000 lb	25 lb

Replacement load cells

THC-500 beam only	500 lb	3 lb
THC-1.25K beam only	1,250 lb	3 lb
THC-2.5K beam only	2,500 lb	3 lb
THC-4K beam only	4,000 lb	3 lb
THC-5K beam only	5,000 lb	4 lb
THC-10K beam only	10,000 lb	6 lb

Dimensions in inches

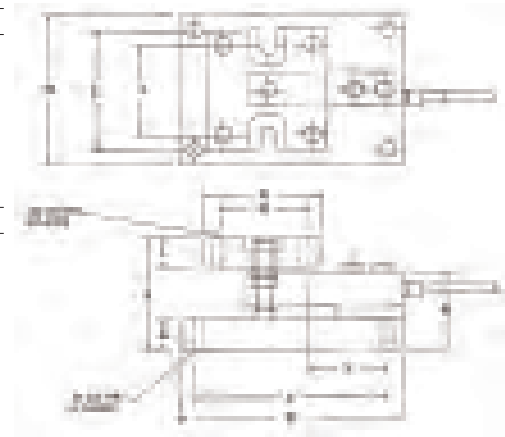
Capacity	A	B	C	D	E	F	G
500-2.5K	3.782	7.500	6.500	5.000	4.000	3.000	4.000
4K	3.946	7.500	6.500	5.000	4.000	3.000	4.000
5K	4.030	7.500	6.500	5.000	4.000	3.000	4.000
10K	4.280	8.500	7.500	5.000	4.000	3.000	4.000

Dimensions in inches continued

Capacity	H	K	L	M	N
500-2.5K	3.000	1.00	1.00	2.590	2.650
4K	3.000	1.00	1.00	2.590	2.650
5K	3.000	1.00	1.00	2.838	2.650
10K	3.000	1.00	1.00	3.088	3.900



RTM Tank Mount Assy



Tank



65059-100 w/TWA



65059-1K w/TWA



65059-2.5K w/TWA

65059 TWA Tank Weighing Assembly - Sensortronics

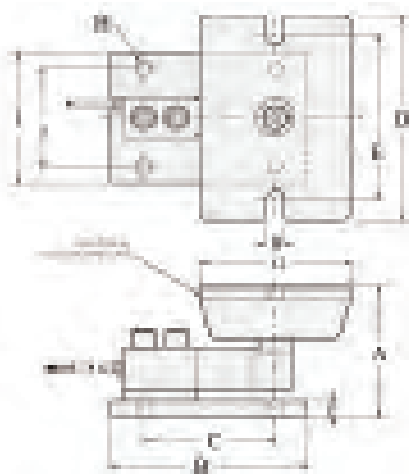
Eliminates check rods, provides shock absorption for high impact loads. 3 mv/v, 0.1% accuracy, 350 ohms, 20 ft 4 cond cable, nickel plated steel load cell, zinc plated steel mount, neoprene shock mount, IP67.

Part Number	Capacity	Weight
65059-50 w/TWA	50 lb	4 lb
65059-75 w/TWA	75 lb	4 lb
65059-100 w/TWA	100 lb	4 lb
65059-150 w/TWA	150 lb	4 lb
65059-250 w/TWA	250 lb	4 lb
65059-500 w/TWA	500 lb	8 lb
65059-1K w/TWA	1,000 lb	9 lb
65059-1.5K w/TWA	1,500 lb	9 lb
65059-2K w/TWA	2,000 lb	10 lb
65059-2.5 w/TWA	2,500 lb	10 lb

Stainless steel load cell & mount

65059-500 w/TWA S.S.	500 lb	8 lb
65059-1K w/TWA S.S.	1,000 lb	9 lb
65059-1.5K w/TWA SS	1,500 lb	9 lb
65059-2K w/TWA S.S.	2,000 lb	10 lb
65059-2.5 w/TWA S.S.	2,500 lb	10 lb

Replacement load cells are available as follows:
Capacities 50 lb through 250 lb use Sensortronics Model 60040.
Capacities 500 lb through 2,500 lb use Sensortronics Model 65023.



Dimensions in inches

Capacity	A	B	C	D	E	F	G	H	I	J
50-250	3.13	4.00	3.25	3.68	3.00	0.50	2.38	0.34	3.00	2.25
500	3.88	6.00	4.00	5.50	4.13	0.50	3.38	0.56	4.00	3.00
1K	4.00	6.00	4.00	5.13	4.13	0.50	3.00	0.44	4.00	3.00
1.5-2.5K	4.00	6.00	4.00	6.25	5.00	0.50	4.62	0.56	4.00	3.00

Tank

TCM Tank Canister Mount Assembly - Totalcomp

This tank mount assembly uses a hermetically sealed canister load cell with two attached mounting plates. The lower plate is rigidly mounted to the load cell and the top plate allows horizontal expansion but does not allow the top plate to separate from the load cell. 2 mv/v, 0.05% nonlinearity, 350/350 ohms, 30 ft 4 cond cable, **stainless steel** load cell and mounting plates, IP67.

Part Number	Capacity	Weight
TCM7-1K-SS	1,000 lb	20 lb
TCM7-2K-SS	2,000 lb	20 lb
TCM7-5K-SS	5,000 lb	20 lb
TCM8-10K-SS	10,000 lb	41 lb
TCM8-20K-SS	20,000 lb	41 lb
TCM8-25K-SS	25,000 lb	41 lb
TCM8-50K-SS	50,000 lb	44 lb
TCM8-75K-SS	75,000 lb	45 lb
TCM8-100K-SS	100,000 lb	50 lb
TCM8-150K-SS	150,000 lb	60 lb
TCM8-200K-SS	200,000 lb	60 lb
TCM8-250K-SS	250,000 lb	60 lb

Replacement load cells

TC78-1K-SS	1,000 lb	6 lb
TC78-2K-SS	2,000 lb	6 lb
TC78-5K-SS	5,000 lb	6 lb
TC78-10K-SS	10,000 lb	6 lb
TC78-20K-SS	20,000 lb	6 lb
TC78-25K-SS	25,000 lb	6 lb
TC78-50K-SS	50,000 lb	6 lb
TC78-75K-SS	75,000 lb	13 lb
TC78-100K-SS	100,000 lb	13 lb
TC78-150K-SS	150,000 lb	29 lb
TC78-200K-SS	200,000 lb	29 lb
TC78-250K-SS	250,000 lb	29 lb

Dimensions in inches

Capacity	A	B	C	D	E	F	G	H	I	J
1K-5K	5.25	5.00	3.50	5.00	3.50	1.00	1.25	3.00	0.35	3.25
10K-50K	5.25	8.00	6.00	8.00	6.00	1.00	1.25	3.00	0.35	3.25
75K	5.25	8.00	6.00	8.00	6.00	1.00	2.31	4.00	0.35	5.00
100K	7.00	8.00	6.00	8.00	6.00	1.00	2.31	4.00	.550	5.00
150K-250K	9.25	8.00	6.00	8.00	6.00	1.00	3.00	6.00	1.10	7.25

Dimensions in inches continued

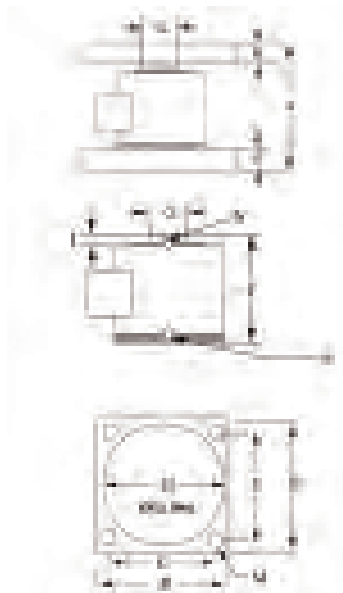
Capacity	K	M	N
1K-5K	1.00	.560	1/2-20 UNF
10K-50K	1.00	.560	1/2-20 UNF
75K	1.00	.560	1/2-20 UNF
100K	1.00	.560	1/2-20 UNF
150K-250K	1.00	.625	1/2-20 UNF



TCM8



TC78



Tank



T408

T408 Tank Canister Mount Assembly - Totalcomp

Low profile canister load cell is hermetically sealed, self checking and has integral mounting plates. This mount allows for thermal expansion and contraction. Also includes built in vibration dampening and a self aligning design. Nickel plated alloy steel or **stainless steel** construction. Built in leveling assembly for easy installation. Interchangeable with Beowulf model 408 Flexmaster

Alloy steel, nickel plated

2 mv/v, 0.05% nonlinearity, 1050/1000 ohms, 25 ft 6 cond cable, nickel plated steel load cell and mounting plates, IP67.

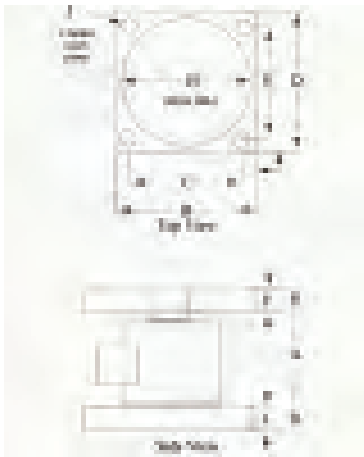
Part Number	Capacity	Weight
T408-300	300 lb	13 lb
T408-500	500 lb	13 lb
T408-1,000	1,000 lb	13 lb
T408-1,500	1,500 lb	13 lb
T408-2,000	2,000 lb	13 lb
T408-3,000	3,000 lb	13 lb
T408-5,000	5,000 lb	13 lb

Stainless steel

2 mv/v, 0.05% nonlinearity, 1050/1000 ohms, 25 ft 6 cond cable, **stainless steel** load cell and mounting plates, IP67.

Part Number	Capacity	Weight
T408-300-SS	300 lb	13 lb
T408-500-SS	500 lb	13 lb
T408-1,000-SS	1,000 lb	13 lb
T408-1,500-SS	1,500 lb	13 lb
T408-2,000-SS	2,000 lb	13 lb
T408-3,000-SS	3,000 lb	13 lb
T408-5,000-SS	5,000 lb	13 lb

Apr



Dimensions in inches

Capacity	A	B	C	D	E	F	H	I	J
250-5K	4.00	5.00	4.00	5.00	4.00	0.50	3.50	0.50	0.44

Tank

RLC & Weighing Assembly - Revere Transducers

Hermetically sealed stainless steel cell and stainless steel weighing assembly.

Ring Torsion load cell

2 mv/v, 0.02% combined error, 1115/1025 ohms, 3m 4 cond cable 250kg to 1t, 5m 4 cond cable 2t to 10t, **stainless steel.**

Part Number	Capacity	Weight
43S-RLC-250kg-D3	250 kg	16 lb
43S-RLC-500kg-A5	500 kg	16 lb
43S-RLC-1t-A5	1,000 kg	16 lb
43S-RLC-2t-A5	2,000 kg	18 lb
43S-RLC-3.5t-A5	3,500 kg	18 lb
43S-RLC-5t-A5	5,000 kg	18 lb



RLC with Weighing Assembly

RLC load cell only - Revere Transducers

Hermetically sealed stainless steel cell

2 mv/v, 0.02% combined error, 1115/1025 ohms, 3m 4 cond cable 250kg to 1t, 5m 4 cond cable 2t to 10t, **stainless steel.**

NTEP 97-082 III M 5,000 div

Part Number	Capacity	Weight
RLC-D3-250kg-3MP1 *	250 kg	2 lb
RLC-A5-500kg-3MP1	500 kg	2 lb
RLC-A5-1t-3MP1	1,000 kg	2 lb
RLC-A5-2t-5MP1	2,000 kg	3 lb
RLC-A5-3.5t-5MP1	3,500 kg	3 lb
RLC-A5-5t-5MP1	5,000 kg	3 lb
RLC-D3-10t-5MP1 *	10,000 kg	3 lb

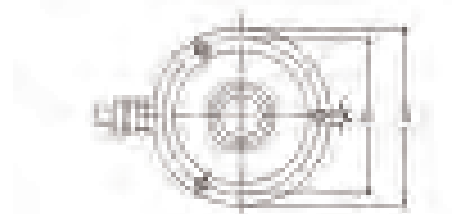
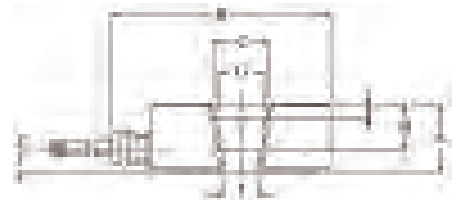
* Not NTEP



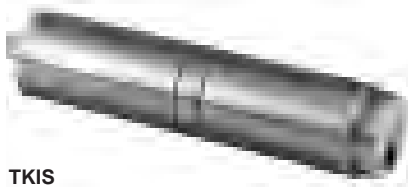
RLC

Dimensions in mm

Capacity	A	B	C	D	E	F	G	H	I	J
250-1kg	25	97.5	25	80	70	1.0	19.0	15.0	M10	9.5
2-5kg	30	97.5	25	80	70	6.0	19.0	20.0	15 H7	8.5
10kg	35	112.5	---	95	83	---	29.1	14.8	24.9	10.0



Tank

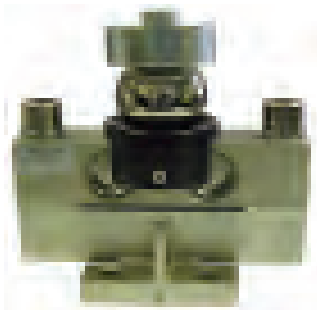


TKIS

TKIS Tank Beam only - Totalcomp

Hermetically sealed stainless steel cell that is interchangeable with BLH® Model KIS single ended tank beam cell.
2 mv/v, 0.02% nonlinearity, 350/350 ohms, 30 ft 4 cond cable, stainless steel, IP67.

Part Number	Capacity	Nominal	Weight
TKIS-10kN	10kN	2,250 lb	8 lb
TKIS-20kN	20kN	4,500 lb	8 lb

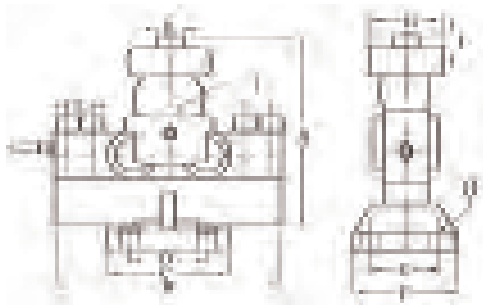


THWM
Weigh module

THWM Weigh Module - Totalcomp

Alloy steel with a hermetically sealed welded covers .
2 mv/v, 0.2% nonlinearity, 700/700 ohms, 40 ft cond cable, nickel plated, IP68.

Part number	Capacity	Nominal	Weight
THWM 10t weigh module	10 t	20,000 lb	38 lb
THWM 20t weigh module	20 t	40,000 lb	38 lb
THWM 30t weigh module	30 t	60,000 lb	38 lb
THWM 40tse weigh module	40 t	80,000 lb	38 lb
THWM 40t weigh module	40 t	80,000 lb	38 lb
THWM 50t weigh module	50 t	100,000 lb	38 lb



Dimensions in inches

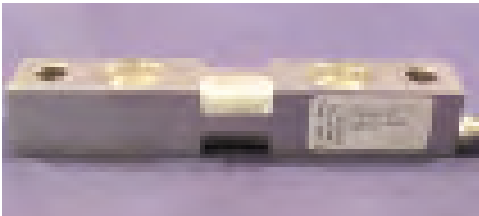
Capacity	A	B	C	D	E	F	G	H	I
10t	7.68	9.45	4.92	3.15	3.94	5.31	3.46	0.71	0.43
20-40tse	8.86	9.45	4.92	3.15	3.94	5.31	3.46	0.71	0.43
40t, 50t	10.28	13.39	6.30	4.92	4.92	6.30	3.78	0.87	0.43

Tank

GDE-SSW beam only - General Sensor

Interchangeable with Sensortronics 65016-SS with welded hermetic seal.
 3mv/v, 0.03% nonlinearity, 700/700 ohm, 50 ft 4 cond cable, **stainless steel**, IP67.

Part Number	Capacity	Weight
GDE-1K-SSW	1,000 lb	4 lb
GDE-2K-SSW	2,000 lb	4 lb
GDE-2.5K-SSW	2,500 lb	4 lb
GDE-5K-SSW	5,000 lb	4 lb
GDE-10K-SSW	10,000 lb	7 lb
GDE-15K-SSW	15,000 lb	7 lb
GDE-20K-SSW	20,000 lb	7 lb
GDE-25K-SSW	25,000 lb	7 lb
GDE-35K-SSW	35,000 lb	16 lb
GDE-50K-SSW	50,000 lb	25 lb
GDE-75K-SSW	75,000 lb	25 lb



GDE-SSW

Dimensions in inches

Capacity	A	B	C	D	E	F	G
1-5K	7.50	1.22	1.22	6.25	1.12	1.25	1.22
10-25K	8.75	1.44	1.94	7.50	1.62	1.99	1.44
35K	8.75	1.44	2.44	7.50	1.62	2.50	1.44
50-75K	13.50	2.44	2.94	11.50	3.25	2.99	1.31



65016WH-SS beam only - Sensortronics

Welded hermetically sealed.
 3 mv/v, 0.05% nonlinearity, 700 ohms, 25 ft 4 cond cable, **stainless steel**, IP68.

Part Number	Capacity	Weight
65016-1K-0104WH-SS	1,000 lb	4 lb
65016-1.5K-0104WH-SS	1,500 lb	4 lb
65016-2K-0104WH-SS	2,000 lb	4 lb
65016-2.5K-0104WH-SS	2,500 lb	4 lb
65016-5K-0104WH-SS	5,000 lb	4 lb
65016-10K-0104WH-SS	10,000 lb	7 lb
65016-15K-0104WH-SS	15,000 lb	7 lb
65016-20K-0104WH-SS	20,000 lb	7 lb
65016-25K-0104WH-SS	25,000 lb	7 lb



65016WH-SS Beam only

Dimensions in inches

Capacity	A	B	C	D	E	F	G
1-5K	7.50	1.22	1.22	6.25	1.12	1.25	1.22
10-25K	8.75	1.44	1.94	7.50	1.62	1.99	1.44
35K	8.75	1.44	2.44	7.50	1.62	2.50	1.44
50-75K	13.50	2.44	2.94	11.50	3.25	2.99	1.31



Tank



TDE16-SS Beam only



TDE17-SS Beam only



TDE16-SS beam only - Totalcomp

Interchangeable with Sontorionics Model 65016.

3 mv/v, 0.03% nonlinearity, 700/700 ohm, 25 ft 4 cond cable 5K-20K, 30 ft 4 cond cable 30K-60K, **stainless steel**, IP67

Part Number	Capacity	Weight
TDE16-1K-SS	1,000 lb	4 lb
TDE16-1.5K-SS	1,500 lb	4 lb
TDE16-2K-SS	2,000 lb	4 lb
TDE16-2.5K-SS	2,500 lb	4 lb
TDE16-5K-SS	5,000 lb	5 lb
TDE16-10K-SS	10,000 lb	7 lb
TDE16-15K-SS	15,000 lb	7 lb
TDE16-20K-SS	20,000 lb	7 lb
TDE16-25K-SS	25,000 lb	7 lb
TDE16-35K-SS	35,000 lb	16 lb
TDE16-50K-SS	50,000 lb	25 lb
TDE16-75K-SS	75,000 lb	25 lb

Dimensions in inches

Capacity	A	B	C	D	E	F	G
1-5K	7.50	1.22	1.22	6.25	1.12	1.25	1.22
10-25K	8.75	1.44	1.94	7.50	1.62	1.99	1.44
35K	8.75	1.44	2.44	7.50	1.62	2.50	1.44
50-75K	13.50	2.44	2.94	11.50	3.25	2.99	1.31

TDE17-SS beam only - Totalcomp -

Interchangeable with Sontorionics Model 65016 & TDE16-SS.

3 mv/v, 0.03% nonlinearity, 800/700 ohm, 10 ft 4 cond cable, **stainless steel**, hermetically sealed & helium filled, IP68.

Part Number	Capacity	Weight
TDE17-2.5K-SS	2,500 lb	4 lb
TDE17-5K-SS	5,000 lb	4 lb

Dimensions in inches

Capacity	A	B	C	D	E	F	G
1-5K	7.50	1.22	1.22	6.25	1.12	1.25	1.22
10-25K	8.75	1.44	1.94	7.50	1.62	1.99	1.44
35K	8.75	1.44	2.44	7.50	1.62	2.50	1.44
50-75K	13.50	2.44	2.94	11.50	3.25	2.99	1.31

Tank Mount Assembly only - Totalcomp

Welded steel, **stainless steel**. Suitable for food, medical and pharmaceutical applications.

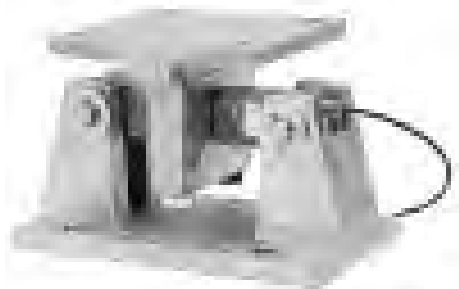
Part Number	Capacity	Weight
TM16-5-SS	1,000 - 5,000 lb	17 lb
TM16-25-SS	10,000 - 25,000 lb	55 lb
TM16-35-SS	35,000 lb	55 lb
TM16-50-SS	50,000 lb	130 lb
TM16-75-SS	75,000 lb	130 lb

Tank

TDE16-SS with Tank Mount Assembly - Totalcomp

Interchangeable with Sensortronics Model 65016.
 3 mv/v, 0.03% nonlinearity, 700/700 ohm, 25 ft 4 cond cable 5K-20K, 30 ft 4 cond cable 30K-60K, stainless steel, IP67.

Part Number	Capacity	Weight
TDE16-1K w/TM-SS	1,000 lb	20 lb
TDE16-1.5K w/TM-SS	1,500 lb	20 lb
TDE16-2K w/TM-SS	2,000 lb	20 lb
TDE16-2.5K w/TM-SS	2,500 lb	20 lb
TDE16-3K w/TM-SS	3,000 lb	20 lb
TDE16-5K w/TM-SS	5,000 lb	20 lb
TDE16-10K w/TM-SS	10,000 lb	63 lb
TDE16-15K w/TM-SS	15,000 lb	63 lb
TDE16-20K w/TM-SS	20,000 lb	63 lb
TDE16-25K w/TM-SS	25,000 lb	63 lb
TDE16-35K w/TM-SS	35,000 lb	71 lb
TDE16-50K w/TM-SS	50,000 lb	155 lb
TDE16-75K w/TM-SS	75,000 lb	155 lb
TDE16-100K w/TM-SS	100,000 lb	305 lb
TDE16-125K w/TM-SS	125,000 lb	355 lb
TDE16-200K w/TM-SS	200,000 lb	510 lb



TDE16-SS w/Tank Mount Assembly

Dimensions in inches

Capacity	A	B	C	D	E	F	G	H	K	L
1K-5K	5.13	9.35	6.25	5	3.75	0.50	4	2.75	0.50	0.56
10K-35K	7.90	12.00	7.50	8	6.00	0.75	8	6.00	0.75	0.78
50K-75K	9.30	16.25	11.50	12	9.50	1.00	9	6.50	1.00	0.78
100K-200K	11.75	23.50	20.00	14	12.00	1.50	10	8.00	1.50	1.12



Tank



TDE16 Beam only

TDE16 beam only - Totalcomp

Interchangeable with Sensortronics Model 65016.

3 mv/v, 0.03% nonlinearity, 700/700 ohm, 25 ft 4 cond cable, nickel plated steel, IP67.

Part Number	Capacity	Weight
TDE16-1K	1,000 lb	4 lb
TDE16-1.5K	1,500 lb	4 lb
TDE16-2K	2,000 lb	4 lb
TDE16-2.5K	2,500 lb	4 lb
TDE16-5K	5,000 lb	4 lb
TDE16-10K	10,000 lb	7 lb
TDE16-15K	15,000 lb	7 lb
TDE16-20K	20,000 lb	7 lb
TDE16-25K	25,000 lb	7 lb
TDE16-35K	35,000 lb	16 lb
TDE16-50K	50,000 lb	25 lb
TDE16-75K	75,000 lb	25 lb

Dimensions in inches

Capacity	A	B	C	D	E	F	G
1-5K	7.50	1.22	1.22	6.25	1.12	1.25	1.22
10-25K	8.75	1.44	1.94	7.50	1.62	1.99	1.44
35K	8.75	1.44	2.44	7.50	1.62	2.50	1.44
50-75K	13.50	2.44	2.94	11.50	3.25	2.99	1.31



Tank Mount Assembly only - Totalcomp

Welded steel, epoxy painted finish.

Part Number	Capacity	Weight
TM16-5	1,000 - 5,000 lb	17 lb
TM16-25	10,000 - 25,000 lb	56 lb
TM16-35	35,000 lb	56 lb
TM16-50	50,000 lb	130 lb
TM16-75	75,000 lb	130 lb
TM16-125	100,000 - 125,000 lb	250 lb

Tank

TDE16 with Tank Mount Assembly - Totalcomp

Interchangeable with Sensortronics Model 65016.
3 mv/v, 0.03% nonlinearity, 700/700 ohm, 25 ft 4 cond cable, nickel plated steel load cell, epoxy painted mount, IP67.

Part Number	Capacity	Weight
TDE16-1K w/TM	1,000 lb	20 lb
TDE16-1.5K w/TM	1,500 lb	20 lb
TDE16-2K w/TM	2,000 lb	20 lb
TDE16-2.5K w/TM	2,500 lb	20 lb
TDE16-5K w/TM	5,000 lb	20 lb
TDE16-10K w/TM	10,000 lb	63 lb
TDE16-15K w/TM	15,000 lb	63 lb
TDE16-20K w/TM	20,000 lb	63 lb
TDE16-25K w/TM	25,000 lb	63 lb
TDE16-35K w/TM	35,000 lb	71 lb
TDE16-50K w/TM	50,000 lb	155 lb
TDE16-75K w/TM	75,000 lb	155 lb



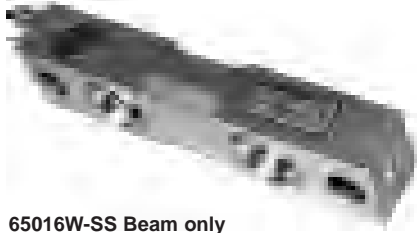
**TDE16
w/Tank Mount Assembly**

Dimensions in inches

Capacity	A	B	C	D	E	F	G	H	K	L
1K-5K	5.13	9.35	6.25	5	3.75	0.50	4.00	2.75	0.50	0.56
10K-35K	7.90	12.00	7.50	8	6.00	0.75	8.00	6.00	0.75	0.78
50K-75K	9.30	16.25	11.50	12	9.50	1.00	9.00	6.50	1.00	0.78
100K-200K	11.75	23.50	20.00	14	12.00	1.50	10.00	8.00	1.50	1.12



Tank



65016W-SS Beam only

65016W-SS beam only - Sensortronics

3 mv/v, 0.05% nonlinearity, 700 ohms, 25 ft 4 cond cable, stainless steel, IP67.

Part Number	Capacity	Weight
65016-1K-0104W-SS	1,000 lb	4 lb
65016-1.5K-0104W-SS	1,500 lb	4 lb
65016-2K-0104W-SS	2,000 lb	4 lb
65016-2.5K-0104W-SS	2,500 lb	4 lb
65016-5K-0104W-SS	5,000 lb	4 lb
65016-10K-0104W-SS	10,000 lb	7 lb
65016-15K-0104W-SS	15,000 lb	7 lb
65016-20K-0104W-SS	20,000 lb	7 lb
65016-25K-0104W-SS	25,000 lb	7 lb
65016-35K-0104W-SS	35,000 lb	16 lb
65016-50K-0104W-SS	50,000 lb	25 lb
65016-75K-0104W-SS	75,000 lb	25 lb

Dimensions in inches



Capacity	A	B	C	D	E	F	G
1-5K	7.50	1.22	1.22	6.25	1.12	1.25	1.22
10-25K	8.75	1.44	1.94	7.50	1.62	1.99	1.44
35K	8.75	1.44	2.44	7.50	1.62	2.50	1.44
50-75K	13.50	2.44	2.94	11.50	3.25	2.99	1.31

SS Mounting Assembly Only - Sensortronics

Mounting assembly is cast stainless steel. These mounts are cast.

Part Number	Capacity	Weight
1605-SS	1,000 - 5,000 lb	17 lb
1625-SS	10,000 - 25,000 lb	56 lb
1625-0104-SS	35,000 lb	56 lb
1650-SS	50,000 - 60,000 lb	130 lb
1675-SS	75,000 lb	130 lb

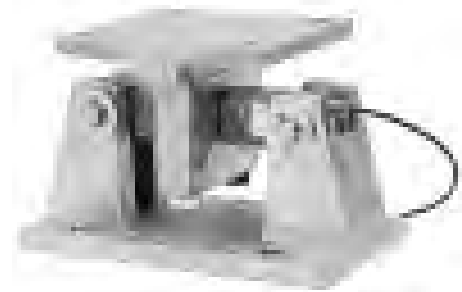
With 17-4 PH stainless steel and are prone to surface blemishes and discoloration. They are **not** suitable for food, medical or pharmaceutical applications.

Tank

65016-SS with tank weighing assembly - Sensortronics

Welded covers over gauged area.
 3 mv/v, 0.05% nonlinearity, 700 ohms, 25 ft 4 cond cable. Load cell is **stainless steel**.
 Mount is cast **stainless steel**, IP67

Part Number	Capacity	Weight
65016-1K w/1605-SS	1,000 lb	20 lb
65016-1.5K w/1605-SS	1,500 lb	20 lb
65016-2K w/1605-SS	2,000 lb	20 lb
65016-2.5K w/1605-SS	2,500 lb	20 lb
65016-3K w/1605-SS	3,000 lb	20 lb
65016-5K w/1605-SS	5,000 lb	20 lb
65016-10K w/1625-SS	10,000 lb	63 lb
65016-15K w/1625-SS	15,000 lb	63 lb
65016-20K w/1625-SS	20,000 lb	63 lb
65016-25K w/1625-SS	25,000 lb	63 lb
65016-35K w/1625-SS	35,000 lb	71 lb
65016-50K w/1650-SS	50,000 lb	155 lb
65016-75K w/1675-SS	75,000 lb	155 lb



65016-SS
w/mounting assembly

Dimensions in inches

Capacity	A	B	C	D	E	F	G	H	K	L
1K-5K	5.13	9.35	6.25	5	3.75	0.50	4	2.75	0.50	0.56
10K-35K	7.90	12.00	7.50	8	6.00	0.75	8	6.00	0.75	0.78
50K-75K	9.30	16.25	11.50	12	9.50	1.00	9	6.50	1.00	0.78
100K-200K	11.75	23.50	20.00	14	12.00	1.50	10	8.00	1.50	1.12



Tank



65016 Beam only



65016 beam only - Sensortronics

3 mv/v, 0.05% nonlinearity, 700 ohms, 25 ft 4 cond cable, nickel plated steel, IP67.

Part Number	Capacity	Weight
65016-1K	1,000 lb	4 lb
65016-1.5K	1,500 lb	4 lb
65016-2K	2,000 lb	4 lb
65016-2.5K	2,500 lb	4 lb
65016-3K	3,000 lb	4 lb
65016-5K	5,000 lb	4 lb
65016-10K	10,000 lb	7 lb
65016-15K	15,000 lb	7 lb
65016-20K	20,000 lb	7 lb
65016-25K	25,000 lb	7 lb
65016-35K	35,000 lb	16 lb
65016-50K	50,000 lb	25 lb
65016-75K	75,000 lb	25 lb

Dimensions in inches

Capacity	A	B	C	D	E	F	G
1-5K	7.50	1.22	1.22	6.25	1.12	1.25	1.22
10-25K	8.75	1.44	1.94	7.50	1.62	1.99	1.44
35K	8.75	1.44	2.44	7.50	1.62	2.50	1.44
50-75K	13.50	2.44	2.94	11.50	3.25	2.99	1.31

Tank Weighing Assembly Only - Sensortronics

Mounting is cast ductile iron with baked on aluminized coating.

Part Number	Capacity	Weight
1605	1,000 - 5,000 lb	17 lb
1625	10,000 - 25,000 lb	56 lb
1625-0112	35,000 lb	56 lb
1650	50,000 - 60,000 lb	130 lb
1675	75,000 lb	130 lb
16125	125,000 lb	300 lb

Tank

65016 with tank weighing assembly - Sensortronics

Covers over gauged area are epoxied in place.
 3 mv/v, 0.05% nonlinearity, 700 ohms, 25 ft 4 cond cable. Load cell is nickel plated steel.
 Mount is cast ductile iron with baked on aluminized coating, IP67.

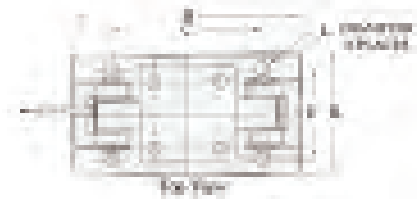
Part Number	Capacity	Weight
65016-1K w/1605	1,000 lb	20 lb
65016-1.5K w/1605	1,500 lb	20 lb
65016-2K w/1605	2,000 lb	20 lb
65016-2.5K w/1605	2,500 lb	20 lb
65016-5K w/1605	5,000 lb	20 lb
65016-10K w/1625	10,000 lb	63 lb
65016-15K w/1625	15,000 lb	63 lb
65016-20K w/1625	20,000 lb	63 lb
65016-25K w/1625	25,000 lb	63 lb
65016-35K w/1625	35,000 lb	71 lb
65016-50K w/1650	50,000 lb	155 lb
65016-75K w/1675	75,000 lb	155 lb



65016
w/mounting assembly

Dimensions in inches

Capacity	A	B	C	D	E	F	G	H	K	L
1K-5K	5.13	9.35	6.25	5	3.75	0.50	4	2.75	0.50	0.56
10K-35K	7.90	12.00	7.50	8	6.00	0.75	8	6.00	0.75	0.78
50K-75K	9.30	16.25	11.50	12	9.50	1.00	9	6.50	1.00	0.78
100K-200K	11.75	23.50	20.00	14	12.00	1.50	10	8.00	1.50	1.12



Tank

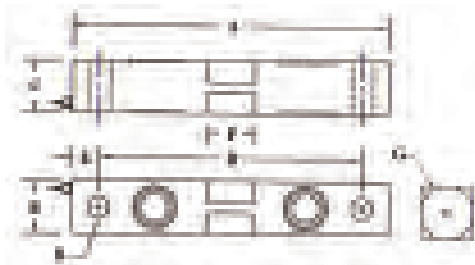


GDE16 Beam only

GDE16 beam only - General Sensor

3 mv/v, 0.05% nonlinearity, 700 ohms, 25 ft 4 cond cable, nickel plated steel, IP67.

Part Number	Capacity	Weight
GDE16-1K	1,000 lb	4 lb
GDE16-2K	2,000 lb	4 lb
GDE16-2.5K	2,500 lb	4 lb
GDE16-3K	3,000 lb	4 lb
GDE16-5K	5,000 lb	4 lb
GDE16-10K	10,000 lb	7 lb
GDE16-15K	15,000 lb	7 lb
GDE16-20K	20,000 lb	7 lb
GDE16-25K	25,000 lb	7 lb
GDE16-50K	50,000 lb	25 lb
GDE16-75K	75,000 lb	25 lb



Dimensions in inches

Capacity	A	B	C	D	E	F	G	H
1-5K	7.50	1.25	1.25	6.25	0.62	1.15	1.25	0.50
10-25K	8.75	1.94	1.44	7.50	0.62	2.00	2.00	0.81
35K	8.75	2.50	1.50	7.50	0.62	2.00	2.50	0.81
50K	13.50	2.94	2.44	11.50	1.00	3.25	3.00	1.31
75K	13.50	2.94	2.44	11.50	1.00	3.25	-----	1.31

Tank Mount Assembly only - Totalcomp

Welded steel, epoxy painted finish.

Part Number	Capacity	Weight
TM16-5	1,000 - 5,000 lb	17 lb
TM16-25	10,000 - 25,000 lb	55 lb
TM16-35	35,000 lb	55 lb
TM16-50	50,000 lb	130 lb
TM16-75	75,000 lb	130 lb

Tank

GDE16 with tank weighing assembly - General Sensor

3 mv/v, 0.05% nonlinearity, 700 ohms, 25 ft 4 cond cable, nickel plated load cell, epoxy painted mount, IP67.

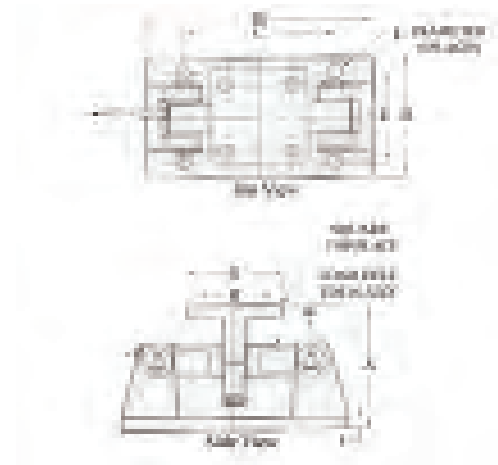
Part Number	Capacity	Weight
GDE16-1K w/TM	1,000 lb	20 lb
GDE16-2K w/TM	2,000 lb	20 lb
GDE16-2.5K w/TM	2,500 lb	20 lb
GDE16-3K w/TM	3,000 lb	20 lb
GDE16-5K w/TM	5,000 lb	20 lb
GDE16-10K w/TM	10,000 lb	63 lb
GDE16-15K w/TM	15,000 lb	63 lb
GDE16-20K w/TM	20,000 lb	63 lb
GDE16-25K w/TM	25,000 lb	63 lb
GDE16-50K w/TM	50,000 lb	155 lb
GDE16-75K w/TM	75,000 lb	155 lb



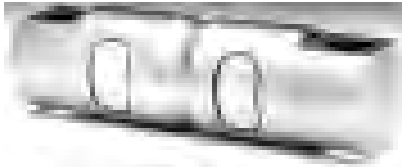
GDE16
w/mounting assembly

Dimensions in inches

Capacity	A	B	C	D	E	F	G	H	K	L
1K-5K	5.13	9.35	6.25	5	3.75	0.50	4	2.75	0.50	0.56
10K-35K	7.90	12.00	7.50	8	6.00	0.75	8	6.00	0.75	0.78
50K-75K	9.30	16.25	11.50	12	9.50	1.00	9	6.50	1.00	0.78
100K-200K	11.75	23.50	20.00	14	12.00	1.50	10	8.00	1.50	1.12



Tank



9103 Beam only

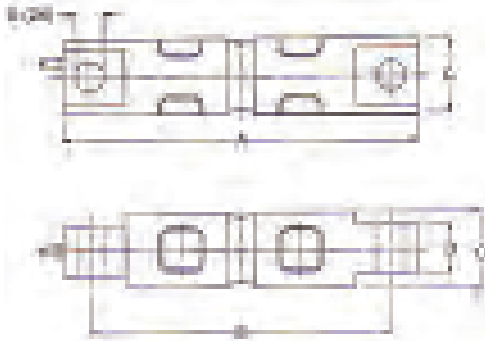
9103 beam only - Revere Transducers Inc

3 mv/v, 0.1% combined, 860/700 ohm, 10 ft 4 cond cable 5K-20K, 30 ft 4 cond cable 30K-60K, **stainless steel.**

NTEP 99-153 M IIIIL 10,000 div (B10)

Part Number	Capacity	Weight
9103-D3-5K-30P1 *	5,000 lb	5 lb
9103-B10-10K-30P1	10,000 lb	5 lb
9103-B10-15K-30P1	15,000 lb	5 lb
9103-B10-20K-30P1	20,000 lb	5 lb
9103-B10-30K-30P1	30,000 lb	18 lb
9103-B10-40K-30P1	40,000 lb	18 lb
9103-B10-50K-30P1	50,000 lb	18 lb
9103-B10-60K-30P1	60,000 lb	18 lb
9103-B10-75K-30P1	75,000 lb	18 lb
9103-B10-100K-30P1	100,000 lb	24 lb
9103-D3-150K-30P1 *	150,000 lb	24 lb
9103-D3-200K-30P1 *	200,000 lb	36 lb

* Not NTEP



Dimensions in inches

Capacity	A	B	C	D	E
5K, 10K	8.19	6.85	1.70	1.12	0.66
20K	8.19	6.85	1.95	1.12	0.66
30K-60K	10.25	8.5	3.00	2.37	1.06
100K	11.25	9.5	3.50	2.50	1.06
150K	11.25	9.5	3.90	2.79	1.06
200K	16.10	13.00	5.37	4.59	1.56

EZ Mount I only - Revere Transducers Inc

Welded steel, **stainless steel.**

Part Number	Capacity	Weight
EZMI-20K-SS	5K - 20K	30 lb
EZMI-60K-SS	30K - 60K	90 lb
EZMI-100K-SS	100K	170 lb
EZMI-150K-SS	150K	170 lb

Tank

9103 with EZ Mount I - Revere Transducers Inc

3 mv/v, 0.1% combined, 860/700 ohm, 10 ft 4 cond cable 5K-20K, 30 ft 4 cond cable 30K-60K, **stainless steel.**

NTEP 99-153 M IIL 10,000 div (B10)

Part Number	Capacity
9103-D3-5K w/EZMI *	5,000 lb
9103-B10-10K w/EZMI	10,000 lb
9103-B10-20K w/EZMI	20,000 lb
9103-B10-30K w/EZMI	30,000 lb
9103-B10-40K w/EZMI	40,000 lb
9103-B10-50K w/EZMI	50,000 lb
9103-B10-60K w/EZMI	60,000 lb
9103-B10-100K w/EZMI	100,000 lb
9103-D3-150K w/EZMI*	150,000 lb

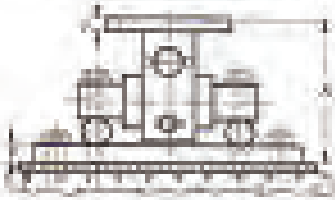
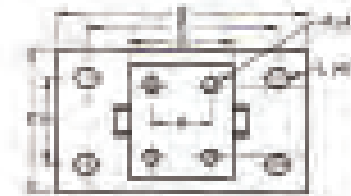
* Not NTEP



9103 w/EZMI I

Dimensions in inches

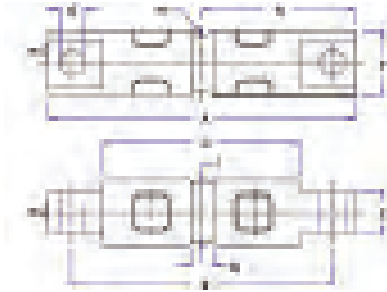
Capacity	A	B	C	D	E	F	G	H	K	L
5K-20K	5.31	11.00	8.00	8	4.00	0.75	5.5	3.00	0.56	1.06
30K-60K	8.43	15.00	11.50	10	6.00	1.00	8.0	5.10	0.75	1.218
100K-150K	10.38	18.00	14.00	12	9.00	1.25	10.0	7.50	0.81	1.38



Tank



TDE03



TDE03 double ended beam only - Totalcomp

Interchangeable with RTI Model 5103.

3 mv/v, 0.03% nonlinearity, 700/700 ohm, 30 ft 4 cond cable, nickel plated steel, IP67.

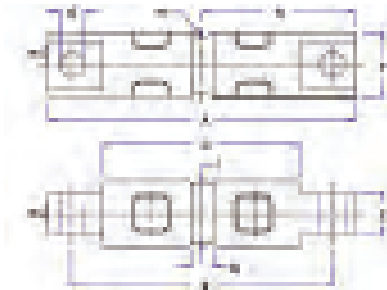
Part Number	Capacity	Weight
TDE03-5K	5,000 lb	6 lb
TDE03-10K	10,000 lb	6 lb
TDE03-20K	20,000 lb	6 lb

Dimensions in inches

Capacity	A	B	C	D	E	F	G	H	I
5K	8.11	6.87	5.24	0.84	1.19	1.70	0.66	0.50	1.50
20K	8.11	6.87	5.24	0.62	1.19	1.95	0.66	0.50	1.50



GDE03



GDE03 double ended beam only - General Sensor -

Interchangeable with RTI Model 5103.

3 mv/v, 0.03% nonlinearity, 800/700 ohm, 50 ft 4 cond cable, nickel plated steel, IP67.

Part Number	Capacity	Weight
GDE03-5K	5,000 lb	5 lb
GDE03-10K	10,000 lb	5 lb
GDE03-20K	20,000 lb	5 lb
GDE03-30K	30,000 lb	16 lb
GDE03-40K	40,000 lb	16 lb
GDE03-50K	50,000 lb	20 lb
GDE03-60K	60,000 lb	20 lb
GDE03-100K	100,000 lb	24 lb
GDE03-150K	150,000 lb	34 lb
GDE03-250K	250,000 lb	44 lb

Dimensions in inches

Capacity	A	B	C	D	E	F	G	H	I
5K	8.11	6.87	5.24	0.84	1.19	1.70	0.66	0.50	1.50
20K	8.11	6.87	5.24	0.62	1.19	1.95	0.66	0.50	1.50
30K-60K	10.25	8.50	6.50	1.00	2.37	3.00	1.06	1.00	2.73
100K	11.25	9.50	7.50	1.25	2.50	3.50	1.06	1.50	3.24
150K	11.25	9.50	7.50	1.25	2.79	3.90	1.06	1.50	3.64
200K	16.09	13.00	10.00	1.29	4.59	5.37	1.55	2.00	5.17

Tank

70210 double ended beam only - Artech

3mv/v, 0.03% nonlinearity, 700/700 ohm, 30 ft 4 cond cable, electroless nickel/chrome plated steel.

NTEP 87-094 A2 IILL 10,000 div

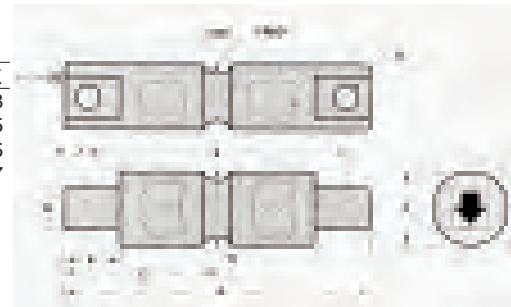
Part Number	Capacity	Weight
70210-5K	5,000 lb	5 lb
70210-10K	10,000 lb	5 lb
70210-20K	20,000 lb	5 lb
70210-30K	30,000 lb	16 lb
70210-40K	40,000 lb	16 lb
70210-50K	50,000 lb	20 lb
70210-60K	60,000 lb	20 lb
70210-100K	100,000 lb	24 lb
70210-150K-SE	150,000 lb	24 lb
70210-150K-LE	150,000 lb	34 lb
70210-200K	200,000 lb	44 lb
70210-250K	250,000 lb	44 lb



70210

Dimensions in inches

Capacity	A	B	C	D	E	F	G	H	I	J	K
5K-20K	8.12	6.87	4.06	1.12	1.44	1.75	0.65	0.62	0.50	0.62	1.48
50K-65K	10.25	8.50	5.12	2.36	1.87	3.00	1.00	1.00	1.00	0.88	2.75
100K-150K	11.25	9.50	5.62	2.50	1.87	3.50	1.06	1.00	1.00	0.88	3.25
200K-250K	16.10	13.00	8.05	4.60	3.05	5.38	1.56	1.50	2.00	1.55	5.17



Tank



NDE-SS

NDE-SS double ended beam only - Nikkei

Interchangeable with RTI Model 5103.

3 mv/v, 0.03% nonlinearity, 700/700 ohm, 20 ft 4 cond cable, **stainless steel.**

Part Number	Capacity	Weight
NDE-20K-SS	20,000 lb	5 lb



5103 Beam only

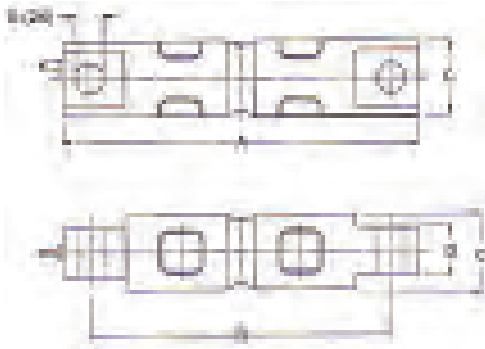


5103 beam only - Revere Transducers Inc

3 mv/v, 0.03% nonlinearity, 700/700 ohm, 30 ft 4 cond cable, nickel plated steel.

NTEP 86-039P IIIIL M 10,000 div (B10)

Part Number	Capacity	Weight
5103-B10-5K-30P1	5,000 lb	6 lb
5103-B10-10K-30P1	10,000 lb	6 lb
5103-B10-20K-30P1	20,000 lb	6 lb
5103-B10-30K-30P1	30,000 lb	18 lb
5103-B10-40K-30P1	40,000 lb	18 lb
5103-B10-50K-30P1	50,000 lb	20 lb
5103-B10-60K-30P1	60,000 lb	20 lb
5103-B10-100K-30P1	100,000 lb	24 lb
5103-B10-150K-30P1	150,000 lb	24 lb
5103-D3-200K-30P1	200,000 lb	46 lb
5103-D3-250K-30P1	250,000 lb	46 lb



Dimensions in inches

Capacity	A	B	C	D	E
5K, 10K	8.12	6.87	1.70	1.12	0.62
20K	8.12	6.87	1.95	1.12	0.62
30K-60K	10.25	8.5	3.00	2.37	1.06
100K	11.25	9.5	3.50	2.50	1.06
150K	11.25	9.5	3.90	2.79	1.06
200K	16.10	13.00	5.37	4.59	1.56

Tank

5103 with mounting assembly - Revere Transducers Inc

3 mv/v, 0.03% nonlinearity, 700/700 ohm, 30 ft 4 cond cable, nickel plated steel, epoxy painted mount.

NTEP 86-039 IIIIL M 10,000 div (B10)

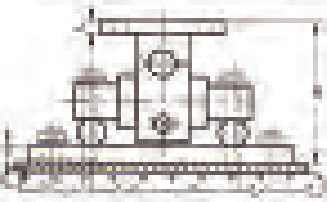
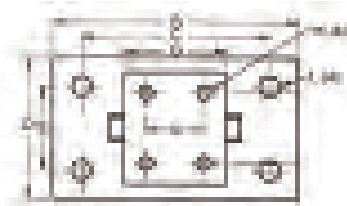
Part Number	Capacity	Weight
5103-B10-5K w/mount	5,000 lb	35 lb
5103-B10-10K w/mount	10,000 lb	35 lb
5103-B10-20K w/mount	20,000 lb	35 lb
5103-B10-30K w/mount	30,000 lb	108 lb
5103-B10-40K w/mount	40,000 lb	108 lb
5103-B10-50K w/mount	50,000 lb	108 lb
5103-B10-60K w/mount	60,000 lb	108 lb
5103-B10-100K w/mount	100,000 lb	190 lb
5103-B10-150K w/mount	150,000 lb	190 lb
5103-B10-200K w/mount	200,000 lb	761 lb
5103-D3-250K w/mount	250,000 lb	761 lb

Dimensions in inches

Capacity	A	B	C	D	E	F	G	H	K	L
5K-25K	5.31	11.00	8.00	8	4.00	0.75	5.5	3.00	0.56	1.06
30K-60K	8.43	15.00	11.50	10	6.00	1.00	8.0	5.10	0.75	1.218
100K-150K	10.38	18.00	14.00	12	9.00	1.25	10.0	7.50	0.81	1.38



5103 w/EZM I



Mounting assembly only for 5103.

Welded steel, epoxy painted finish.

Part Number	Capacity	Weight
Mount for 5103-20K	5K - 20K	29 lb
Mount for 5103-60K	30K - 60K	86 lb
Mount for 5103-100K	100K	166 lb
Mount for 5103-150K	150K	166 lb
Mount for 5103-250K	200K - 250K	715 lb